



## Rack Mount Battery

### ► Modular Design

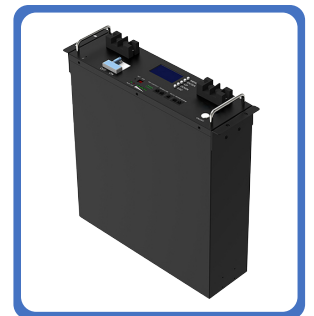
5kWh/10kWh modular design, scalable from 5 to 150 kWh

### ► Safety

BMS & Breaker two Level over current protection

### ► Wide Compatibility

Compatible with multiple brands of mainstream inverter use



### ► Multiple Applications

Meet the needs of domestic and small commercial projects for back-up power

### ► Optional Function

Bluetooth / Wifi / Antitheft (optional)

### ► Long Life

Safe and long lasting with a cycle life of 6500 cycles

Model	FR4800	FR5120	FR9600	FR10240
<b>Electrical Characteristics</b>				
Rate Voltage(Vdc)	48	51.2	48	51.2
Capacity(Ah)	100	100	200	200
Energy Storage(KWH)	4.8	5.12	9.6	10.24
Cycle Life	6500 cycles @80% DOD, 0.5C			
Monthly Self Discharge	less than 2%			
<b>Charge/Discharge standard</b>				
Charge Voltage	54V	57.6V	54V	57.6V
Max. Charge Current(A)	100 (Optional 150/200A for 200AH pack)			
Max. Discharge Current(A)	100 (Optional 150/200A for 200AH pack)			
Discharge Cut-off Voltage	40.5VDC	43.2VDC	40.5VDC	43.2VDC
Charge Cut-off Voltage	54.75VDC	58.4VDC	54.75VDC	58.4VDC
<b>Environment</b>				
Charge Temperature	0°C to 55°C @60±25% Relative Humidity			
Discharge Temperature	-25°C to 55°C @60±25% Relative Humidity			
Storage Temperature	-20°C to 55°C @60±25% Relative Humidity			
<b>Mechanical</b>				
IP Class	IP21			
Material system	LiFePO4			
Case Material	Metal			
Case Type	Rack Mount(3U/4U/5U Optional)			
Product Size L*W*H(mm)	480*442*132(3U)	480*442*132(3U)	680*442*180(4U)	680*442*180(4U)
Package Dimension L*W*H(mm)	580*530*210	580*530*210	820*625*310	820*625*310
Net Weight(kg)	42	44	84	88
Gross Weight(kg)	47	49	93	97
<b>Communication</b>				
Protocol(Optional)	CAN BUS/RS485/RS232			
<b>Certificates</b>				
Pack	UN38.3, MSDS, IEC62619,CE-EMC,UL1973			
Dell	UN38.3, MSDS, IEC62619, CE,UL1973,UL2054			

## Rack Mount Battery